

LARGE MAGNETIC BRACKET

Strong magnetic mounting bracket

Extremely powerful magnetic bracket designed for flexible mounting and positioning of the large NOVA work lights on any magnetic surface.

The bracket has 2 extremely powerful magnets with a holding force of more than 20 kg each, providing altogether a holding force equivalent to 420N. The magnets are rubber-coated to protect and avoid scratching the surface. To obtain maximum flexibility the magnets are turnable and can be rotated to any desirable position. So, even where the magnetic surface available is limited the flexible mounting bracket can be used.

The simple and one-hand-operated mounting bracket ensures fast and secure installation, and the lamp can be tilted to any position required in the daily work. A built-in stop mechanism avoids the pin from falling out of the bracket and disappear. By force the pin can, however, be taken out if needed.

For the minor NOVAs we recommend to use the small MAGNETIC BRACKET item no. 03.5390 with half the holding force.

Replaces the previous universal magnetic mounting bracket no. 03.5340 which is withdrawn.

The bracket is designed for:

- 03.5444 NOVA 10K
- 03.6002 NOVA 10 SPS
- 03.5654 MULTIMATCH 8

But can also be used for:

- 03.5440 NOVA 3K
- 03.5441 NOVA 3K C+R
- 03.5442 NOVA 5K
- 03.5443 NOVA 5K C+R
- 03.6000 NOVA 4 SPS
- 03.6001 NOVA 6 SPS
- 03.5653 MULTIMATCH 3

SPECIFICATIONS

260 x 40 x 55,6 mm

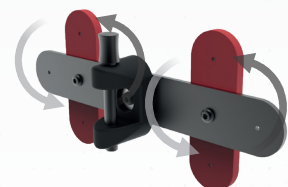
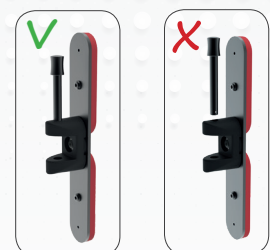
700 g

Holding force for 2 magnets 43 kg
Equivalent to 420N



LARGE MAGNETIC BRACKET

Item no. 03.5391



DESIGNED BY
SCANGRIP
IN DENMARK